



Fall Addition and Subtraction

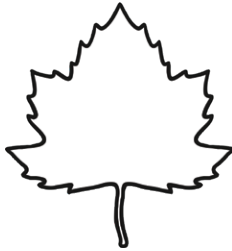




Even or Odd?

Add or subtract to solve the problem. If the answer is even, color the leaf red.
If the answer is odd, color the leaf orange.

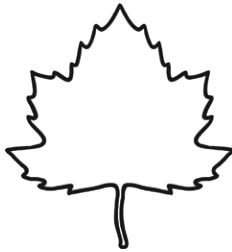
$5 + 3 =$



$4 + 6 =$



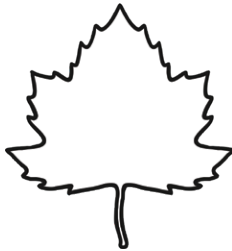
$7 - 2 =$



$12 - 7 =$



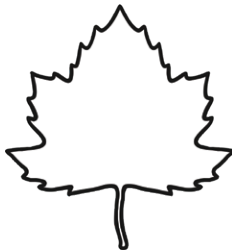
$11 + 4 =$



$5 - 2 =$



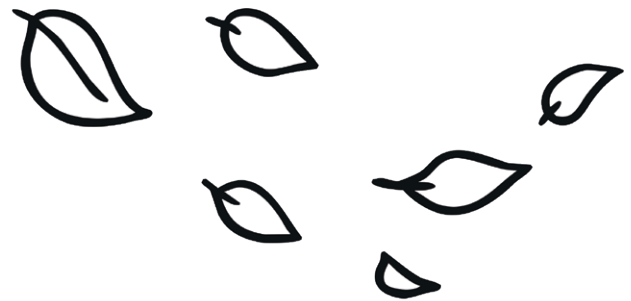
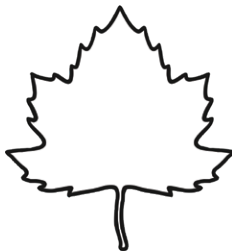
$8 + 7 =$



$15 + 1 =$



$9 - 3 =$





Draw To Solve

1. Ally gathers 5 green apples and 6 red apples. How many apples did Ally gather in total?

$$\underline{\hspace{2cm}} \quad + \quad \underline{\hspace{2cm}} \quad = \quad \underline{\hspace{2cm}}$$

2. The tree had only 10 leaves left on the branches. The wind blew 3 of them off. How many leaves are left on the branches?

$$\underline{\hspace{2cm}} \quad - \quad \underline{\hspace{2cm}} \quad = \quad \underline{\hspace{2cm}}$$



Help the Squirrel Find His Missing Acorns!

$$8 - \underline{\quad\quad} = 3$$

$$3 + \underline{\quad\quad} = 7$$

$$\underline{\quad\quad} + 9 = 11$$

$$9 + \underline{\quad\quad} = 12$$

$$4 + \underline{\quad\quad} = 10$$

$$\underline{\quad\quad} - 5 = 10$$

$$\underline{\quad\quad} - 2 = 3$$

$$\underline{\quad\quad} + 6 = 7$$





Be the Teacher!

Write a word problem to match each picture.

